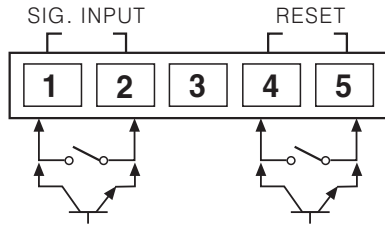


LE8N SERIES

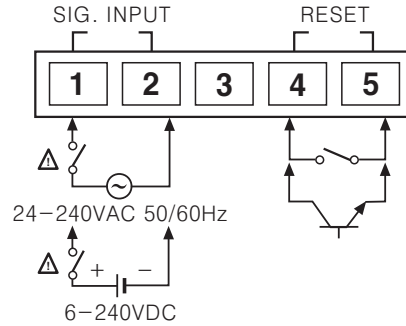
Connections

No-voltage input



- ※ Use reliable contacts enough to flow 5μA of current.
- ※ Terminal 2 and 5 are connected inside. (Non-isolation)

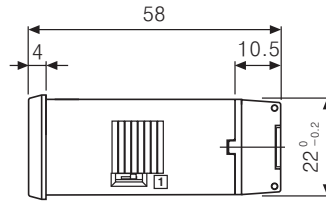
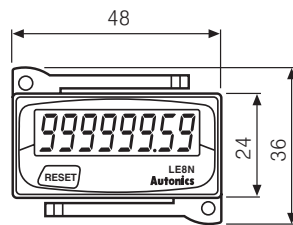
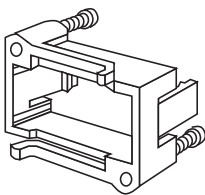
Universal voltage input



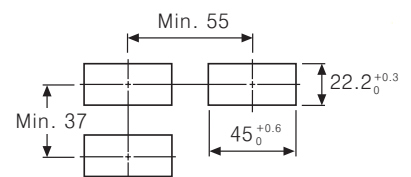
- ※ Terminal 1, 2 and 4, 5 are isolated.

Dimensions

Bracket



Panel cut-out

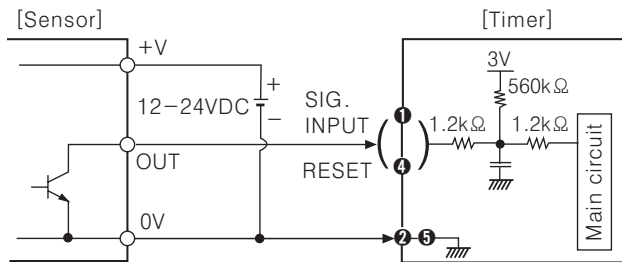


(Unit:mm)

Input connections

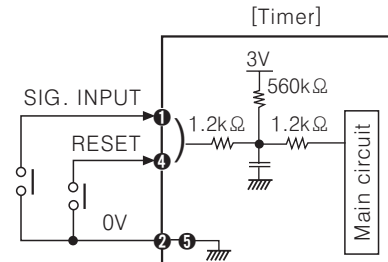
No-voltage input (Standard sensor: NPN open type sensor)

Solid-state input



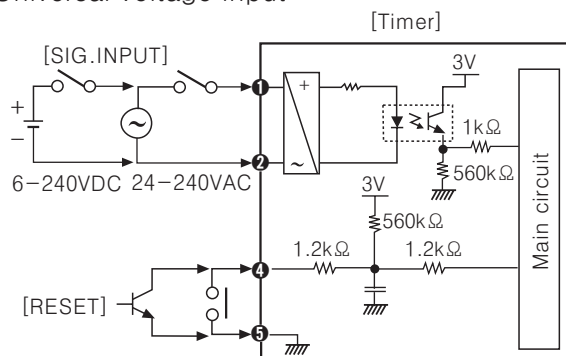
- ※ When power is applied to terminal No ① and ④, input terminal circuit can be broken and a malfunction can occur. (NPN output, PNP output, PNP open collector output type sensor cannot be used.)
- ※ ② and ⑤ are connected inside.

Contact input



- ※ Please use reliable contacts enough to flow 3VDC 5μA of current.

Universal voltage input



- ※ AC type proximity sensor cannot be used as the source of count input signals.
- ※ Input terminal ①, ② and Reset terminal ④, ⑤ are insulated inside.
- ※ It is not possible to reset with AC power or DC power.
- ※ When relay contact is used as the source of RESET signal, please use reliable contacts enough to flow 3VDC 5μA of current.

