

Preset counters mechanic

Meter and revolution counters, adding

Display 5 digits, manual reset by lever

ME280, UE280



ME280 - Meter counter



UE280 - Revolution counter

Technical data - electrical ratings

Preset	2 presets
Preset setting	Press reset button and hold. Enter desired value in any order. Release reset button.
Limit switch	Trigger at preset 1 (adding)
Precontact	Trigger at preset 2
Output contact	Change-over contact
Switching voltage	230 VAC / VDC
Switching current	2 A
Switching capacity	100 VA / 30 W
Spark extinguisher	Recommended for inductive load

Features

- Preset counter with one or two presets
- Meter or revolution counter
- Adding
- Display 5-digits
- Reset by lever

Technical data - mechanical design

Number of digits	5-digits
Digit height	7 mm
Count mode	Adding in a rotational direction to be indicated, subtracting in reverse direction. See part number key
Drive shaft	Both sides, $\varnothing 7$ mm
Reset	By reset lever to preset value. Do not let snap lever or make jerky movements.
Operating temperature	0...+60 °C
Housing type	Surface mount housing
Housing colour	Grey
Dimensions W x H x L	120 x 105 x 95 mm
Dimension mounting plate	158 x 105 mm
Mounting	Base plate, 4 mounting holes
Weight approx.	1400 g
Material	Aluminium die cast alloy
E-connection	Terminal block connector

ME280

Function	Meter counter with preset
Display	White numbers on black Decimal digits in red
Measuring speed	2 revs. = 1 digit = <3000 m/min 2 revs. = 10 di. = <300.0 m/min
Measuring precision	1 m, 1 dm
Measuring range	9 999.9 m and 99 999 m

UE280

Function	Revolution counter with preset
Display	White numbers on black
Operating speed	≤6000 rpm
Measuring range	99 999

Ordering part number

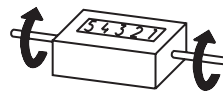
ME280.0

- Measuring range
 - A 99 999 m
 - B 9999.9 m
- Count mode /Direction of rotation
 - 07 2 revs. = 10 digits / I
 - 08 2 revs. = 10 digits / II
 - 13 2 revs. = 1 digit / I
 - 14 2 revs. = 1 digit / II
- Preset / reset
 - 1 1 preset / reset lever, permanent contact
 - 3 2 presets / reset lever, permanent contact

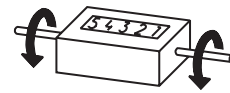
UE280.0

- Measuring range
 - A 99 999
- Count mode /Direction of rotation
 - 11 1 rev. = 1 digit / I
 - 12 1 rev. = 1 digit / II
- Preset / reset
 - 1 1 preset / reset lever, permanent contact
 - 3 2 presets / reset lever, permanent contact

Direction of strokes and rotation



Away from user
Sense of rotation I



Towards user
Sense of rotation II

Accessories

Measuring wheels for ME280

- MR512.07A Circumference 50 cm, knurled aluminium
- MR542.07D Circumference 50 cm, smooth Hytrel TPE-E
- MR552.07A Circumference 50 cm, smooth Vulkollan PUR
- MR562.07A Circumference 50 cm, knopped rubber NBR Nitril
- MR592.07D Circumference 50 cm, grooved Hytrel TPE-E

Dimensions

