

Totalizers mechanic

Stroke, meter and revolution counter

Display 6-digits, reset by key

 adparts

H 300, M 300, U 300



H 300 - Stroke counter



M 300 - Meter counter



U 300 - Revolution counter

Features

- Stroke, meter and revolution counter
- Adding
- Display 6-digits
- Reset by key

Technical data - mechanical design

Number of digits	6-digits
Digit height	4.5 mm
Reset	Reset by detachable key
Drive shaft	Both sides, $\varnothing 4$ mm
Operating temperature	0...+60 °C
Housing type	Surface mount housing with mounting plate
Housing colour	Grey
Dimensions W x H x L	69 x 48 x 28 mm
Dimension mounting plate	60 x 70 mm
Mounting	Base plate, 6 long mounting holes
Weight approx.	130 g
Materials	Housing: Hostaform POM, grey Base plate: Steel zinc-coated

Technical data - mechanical design

H 300

Function	Stroke counter
Display	White numbers on black
Count mode	Adding in a stroke direction to be indicated. 1 stroke = 1 count
Stroke	>38° to <60°
Stroke lever	To be positioned on shaft at will. Stroke lever relocates automatically to start position.
Stroke frequency	<500 strokes/min
Measuring range	999 999

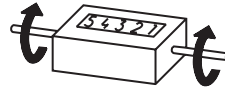
M 300

Function	Meter counter
Display	White numbers on black Decimal digits in red
Count mode	Adding in a rotational direction to be indicated, subtracting in reverse direction. 5 revs. = 10 counts
Measuring speed	<100 m/min (measuring wheel)
Measuring precision	1 dm
Measuring range	99 999.9 m

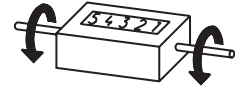
U 300

Function	Revolution counter
Display	White numbers on black
Count mode	Adding in a rotational direction to be indicated, subtracting in reverse direction. 1 rev. = 1 count
Operating speed	≤3000 rpm
Measuring range	999 999

Direction of strokes and rotation



Away from user
Sense of rotation or stroke direction I



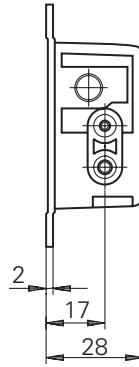
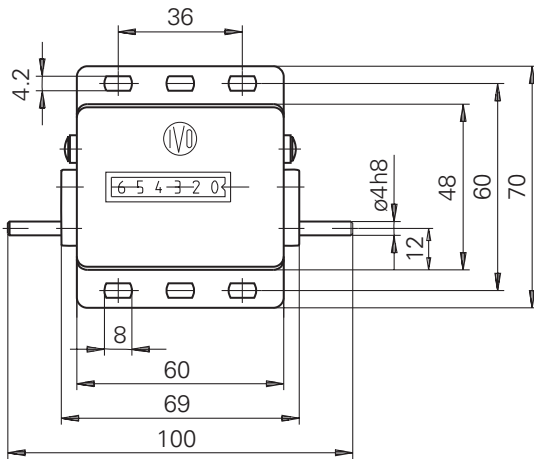
Toward user
Sense of rotation or stroke direction II

Accessories

Measuring wheels for M 300

MR211.04A	Circumference 20 cm, knurled aluminium
MR241.04D	Circumference 20 cm, smooth Hytrel TPE-E
MR261.04A	Circumference 20 cm, knopped rubber NBR Nitril
MR291.04D	Circumference 20 cm, grooved Hytrel TPE-E

Dimensions



Stroke lever and stroke

