

Totalizers mechanic

Meter counters PTB approved

Display 5 digits, manual reset by lever

 adparts

M 310.A



M 310.A - PTB Meter counter

Features

- PTB Meter counter, small
- Adding
- Display 5-digits
- Reset by lever

Technical data - mechanical design

Function	PTB Meter counter
Display	White numbers on black Decimal digits in red
Number of digits	5-digits
Digit height	4.5 mm
Reset	Manual by reset lever. Do not let snap or make jerky movements.
PTB approval	1.3 / 90.02
Count mode	Adding in a rotational direction to be indicated, subtracting in reverse direction. 5 revolutions = 100 counts
Drive shaft	Both sides, $\varnothing 4$ mm
Measuring speed	<60 m/min
Measuring precision	1 cm
Measuring range	999.99 m/cm
Operating temperature	0...+60 °C
Housing type	Surface mount housing with mounting plate
Housing colour	Grey
Dimensions W x H x L	69 x 48 x 28 mm
Dimension mounting plate	80 x 48 mm
Mounting	Base plate, 6 long mounting holes
Weight approx.	130 g
Materials	Housing: Hostaform POM, grey Base plate: Steel zinc-coated

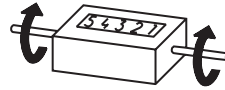
Ordering part number

M 310.A0

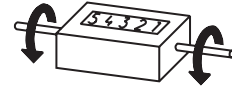
Display / direction of rotation

- 1 5-digits 999.99 m, 5 revolutions = 100 digits / direction I
- 2 5-digits 999.99 m, 5 revolutions = 100 digits / direction II

Direction of strokes and rotation



Away from user
Sense of rotation I



Towards user
Sense of rotation II

Accessories

Measuring wheels

MR211.04A	Circumference 20 cm, knurled aluminium
MR241.04D	Circumference 20 cm, smooth Hytrel TPE-E
MR261.04A	Circumference 20 cm, knopped rubber NBR Nitril
MR291.04D	Circumference 20 cm, grooved Hytrel TPE-E

Dimensions

